



Molecular typing of *Mycobacterium avium* subsp. *paratuberculosis* (MAP) isolated from dairy goats in Brazil



Marina de Castro Campos de Souza^a, Magna Coroa Lima^a, Isis de Freitas Espeschit Braga^a, David Germano Gonçalves Schwarz^a, Ana Paula de Souza Rodrigues^b, Erica Bravo Sales^b, Antônio Augusto Fonseca Junior^b, Maria Aparecida Scatamburlo Moreira^{a,*}

^a Laboratory of Bacterial Diseases, Sector of Preventive Veterinary Medicine and Public Health, Department of Veterinary, Universidade Federal de Viçosa—UFV, pH Rolfs Avenue, University Campus, Viçosa, MG 36570-900, Brazil

^b Laboratory of Molecular Biology—Division of Biosafety, National Agricultural Laboratory—LANAGRO/MG, Ministério da Agricultura Pecuária e Abastecimento (MAPA), Romulo Joviano Avenue, Pedro Leopoldo, MG 33600-000, Brazil

ARTICLE INFO

Article history:

Received 27 August 2015

Received in revised form 28 April 2016

Accepted 12 May 2016

Available online 22 May 2016

ABSTRACT

In the last decade there was a significant increase dairy goat participation in the world and Brazilian agricultural scenario. Minas Gerais state is the third largest producer of goat milk in Brazil. Paratuberculosis is a chronic intestinal disease that mostly affects ruminants and can become a public health problem due to the possible association with Crohn's disease. It is transmitted by ingesting *Mycobacterium avium* subsp. *paratuberculosis* (MAP) contaminated food or water. In recent years, with the development of molecular techniques, the disease has been identified with greater precision and more quickly. MAP strains (S-Sheep, Cattle-C and B-Bison) have also been typed. The detection of a circulating MAP strain in a herd is important to develop epidemiological studies and thus establish better strategies to control paratuberculosis. This study aimed to identify and type MAP in dairy goat farms in the Zona da Mata, the main producing region of Minas Gerais state, Brazil. Feces and milk samples of 467 animals were collected, processed, inoculated in Herrold's Egg Yolk Agar (HEYM) and submitted to PCR and REA techniques. Eleven (2.36%) animals were positive for the presence of MAP in four properties and the isolates were characterized as type C strain. It was concluded that MAP is present in dairy goats from properties in Zona da Mata, MG and that strain type C circulates in the area. This is the first report of MAP typing isolated from dairy goat in Brazil.

© 2016 Elsevier B.V. All rights reserved.

1. Introduction

According to the FAO (Food and Agricultural Organization of the United Nations), there were 1,005,603,003 goats worldwide in 2013, and the continent with the largest number of goats was Asia, with 59% of the animals. Europe has only 2% of world goat herd, but is responsible for 18% of the world production of goat's milk (Dubeuf, 2010). In Brazil, raising goats has increasingly become an important livestock alternative. In the last decade there was a significant increase in goat milk, meat and skin production (Da Silva et al., 2012). The Zona da Mata of Minas Gerais, Brazil, is composed of seven microregions containing approximately 20% of the herd of the Southeast (Fonseca and Bruschi, 2009). It stands out as a major goat milk producing region.

Paratuberculosis is a chronic infectious disease of the intestinal tract caused by the bacterium *Mycobacterium avium* subsp. *paratuberculosis* (MAP), which predominantly affects domestic and wild ruminants (Chiodini, 1984; Clarke, 1997; Ayele et al., 2005; Mota et al., 2010). The ingestion of food or water contaminated with infected animal feces is the main form of transmission. Milk has been suggested as a possible MAP transmission vehicle to humans (Grant et al., 2001).

Based on the comparison of the whole MAP genome, a biphasic evolution scheme has been proposed, distinguishing two main strains: bovine (C-cattle) and sheep (S-sheep), genotypically and phenotypically different from each other (Janagama et al., 2010). The association of each strain with the host is not exclusive and may cause disease in all types of ruminants (Biet et al., 2012). Although the insertion sequence IS1311 is present in *M. avium* subsp. *avium* and MAP, five point mutations differentiate the sequences of the two subspecies (Whittington et al., 1998). Such mutations may be used as a target in restriction enzyme analysis (REA) to realize this differentiation. Furthermore, some copies of IS1311 from the MAP

* Corresponding author.

E-mail address: masm@ufv.br (M.A.S. Moreira).

Table 1

Distribution of producing properties of dairy goat in the mesoregion of Zona da Mata of Minas Gerais, Brazil, by microregions.

Microregions	Number of properties	Percentage (%)
Cataguases	6	14.63
Juiz de	13	31.71
Fora	8	19.51
Manhuaçu	9	21.95
Muriae	1	2.40
Ponte Nova	2	4.88
Uba	2	4.88
Viçosa TOTAL	41	100

C strain contain an additional mutation which can be used to differentiate it from S strain (Whittington et al., 1998). Whittington et al. (2001) confirmed a new type of MAP by REA: Type B (bison), originally isolated from this species, with *in vitro* growth phenotypic characteristics distinct from type C strain.

This study aimed to identify and type MAP in dairy goat farms in Zona da Mata, the main producing region of Minas Gerais state, Brazil. The detection of a circulating MAP strain in a herd is important to develop epidemiological studies and thus establish better strategies to control paratuberculosis.

2. Material and methods

A planned sampling was conducted from a list of 41 farms of dairy goats from the mesoregion Zona of Mata, Minas Gerais state, obtained from a regional association of dairy goat producers. Ten farms were selected (24.39%), according to the distribution in the different micro-regions. The regions are described in Fig. 1, and the distribution of the farms producing goat milk in the regions of Zona da Mata is shown in Table 1. The study included only farms operating for commercial purposes, with a minimum of 50 animals. Animal distribution per age was analyzed and adult animals were selected in order to include only those in milk, randomly. Farm sampling was calculated using the OpenEpi® program, considering an estimated prevalence of 5%, precision 4% and 95% confidence interval.

Initial hygiene milking was conducted prior to milk collection, according to the management of each property, followed by the cleaning of the teats with 70% ethanol and drying with paper towels. The first three milk jets were discarded, and 40 mL of milk were collected, 20 mL of each teat. Feces samples were collected individually, from rectum, using disposable gloves and subsequently transferred into sterilized vials and identified. Feces samples processing followed the method described by Stabel (1997) using hexadecylpyridinium (HPC) 0.9% and antimicrobial solution containing nalidixic acid (50 mg/L), vancomycin hydrochloride (50 mg/L) and amphotericin B (150 mg/L). Milk samples processing followed the method described by Pillai and Jayarao, (2002), using HPC 0.75% and the same anti-microbial solution mentioned above. 100 µL of the processed material were added to tubes containing Herold's Egg Yolk Medium medium (HEYM medium) with or without mycobactin J, then incubated at 37 °C and monitored weekly for 18 weeks. This project was approved by the ethics committee on animal use of Universidade Federal de Viçosa, CEUA/UFV with number 12/2013.

Milk samples were also submitted to PCR, as well as suspect colonies in tubes. The DNA was extracted using the Wizard® Genomic DNA Purification Kit (Promega, Madison, WI, USA) and the protocol followed the manufacturer's recommendations. Conventional IS900 PCR reactions were performed using primers BN1 (5'-GTTATTAACGACGACGCGGAGC-3') and BN2 (5'-ACGATGCTGTGTTGGCGGTTAG-3') (Sivakumar et al., 2005). The positive samples were sequenced in the Laboratory of Molecular

Table 2

Products generated by enzymatic restriction with *MseI* enzymes and *HinfI* enzymes (Whittington et al., 1998).

Species	Restriction enzyme	Restriction pattern generated (pb)
MAP sheep (S)	<i>HinfI</i>	285, 323
MAP cattle (C)	<i>HinfI</i>	67, 218, 285, 323
MAP bison (B)	<i>HinfI</i>	67, 218, 323
MAP	<i>MseI</i>	608
<i>Mycobacterium avium</i>	<i>HinfI</i>	608
<i>Mycobacterium avium</i>	<i>MseI</i>	134, 189, 235

MAP: *Mycobacterium avium* subsp. *paratuberculosis*

Table 3

Number of selected properties and animals, per microregion of Zona da Mata of Minas Gerais, Brazil.

Microregions	Number of selected properties	Number of sampled animals
Viçosa	01	90
Uba	01	32
Juiz de Fora	03	174
Manhuaçu	02	82
Muriae	02	76
Cataguases	01	13
^a Ponte Nova	0	0
TOTAL	10	467

^a It was not sampled because insufficient number of animals.

Biology, LANAGRO/MG- MAPA, Brazil. Amplicons were sequenced in a genetic analyzer 3500 (Life Technologies, USA) and the sequences obtained were submitted to Blast for identification.

The positive samples were submitted to PCR-IS1311 using M56 (5'-GCCGTGAGGCTCTGTGGTGAA-3') and M119 (5'-ATGACGACCGCTTGGGAGAC-3') primers and to subsequent restriction enzyme analysis (REA) according to Marsh et al. (1999). Enzymes *HinfI* (Promega) and *MseI* (NEB) were used to differentiate MAP from *Mycobacterium avium* subsp. *avium*. Strain MAP-K10 and ultrapure water were used as positive and negative controls, respectively. Restriction pattern generated by *HinfI*-digestion differentiates strains type S (sheep) from type C (cattle), while restriction pattern generated by *MseI* differentiates MAP strains from *Mycobacterium avium*.

Table 2 shows the products (pb) generated by enzymatic restriction with *MseI* and *HinfI* enzymes (Whittington et al., 1998).

3. Results

A total of 467 dairy goats from seven microregions were sampled (Table 3), and 467 feces samples and 464 milk samples (two were lost in transportation) were obtained.

In two tubes (0.43%) with mycobactin J containing feces samples from animals of different properties, typical colonies of MAP were observed between 13 and 16 weeks. However, no colonies were found in the tubes containing milk samples. Nine (1.94%) milk samples from four properties were positive in PCR. The identification of all isolates was confirmed also by sequencing, with 94–99% similarity with Map K-10 strain. No digestion was observed with *MseI* enzyme confirmed more one time to be MAP (Fig. 2). The percentage of MAP occurrence in dairy goats of Zona da Mata, MG, was 2.36% (11/467). The Fig. 3 shows the result provided by the Restriction enzyme analysis (REA). All isolates were typed as type C.

4. Discussion

In Brazil, data on paratuberculosis in goat herds are scarce, which highlights the need for epidemiological studies to investi-

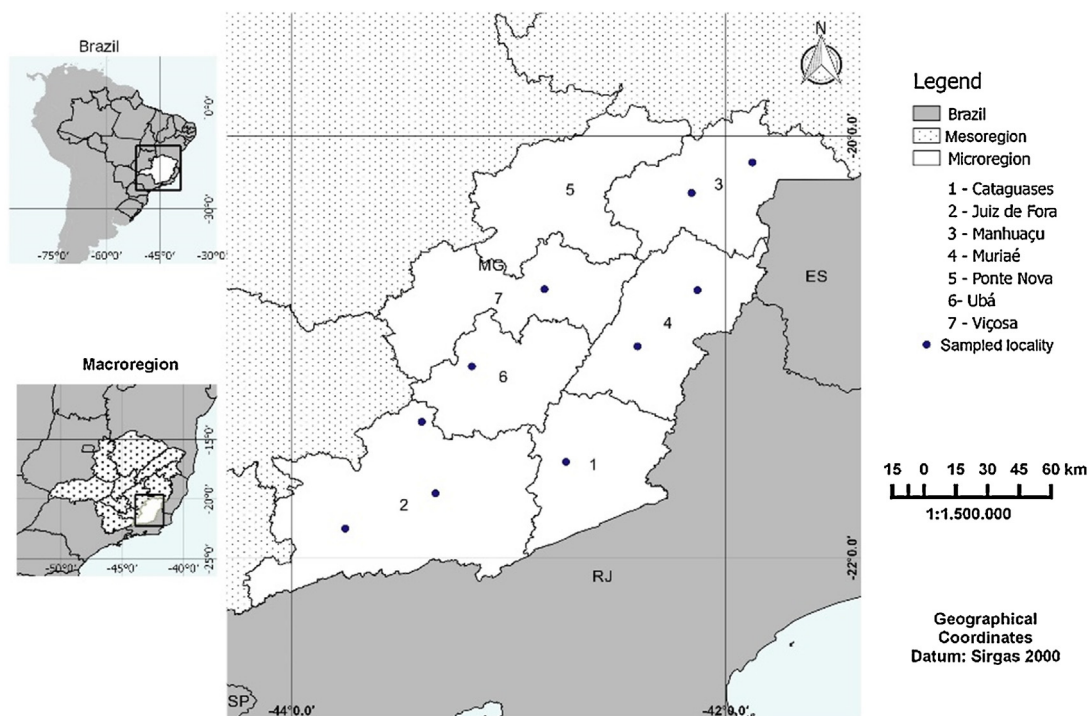


Fig. 1. Location of the mesoregion Zona da Mata of Minas Gerais, Brazil, with microregions. The black dots show the locations of sample collection.

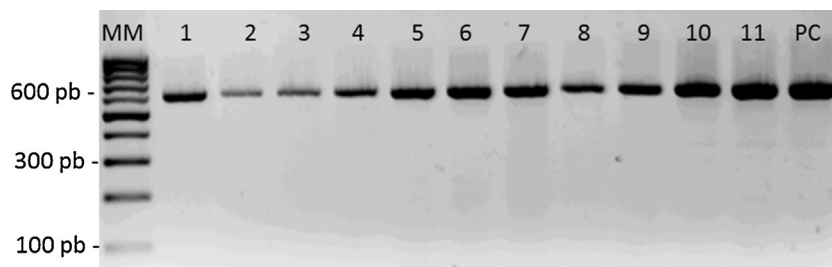


Fig. 2. Restriction enzyme analysis with the enzyme *MseI* of PCR product with *IS1311* of DNA isolates from goat milk. MM: molecular marker (100 pb); lines from 1 to 11: isolates; PC: positive control (MAP K10).

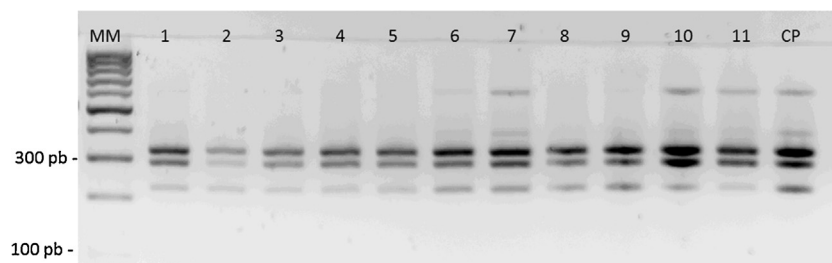


Fig. 3. Restriction enzyme analysis with the enzyme *HinI* of PCR product with *IS1311* of *Mycobacterium avium ssp. paratuberculosis* (MAP) isolated from goat milk. MM: molecular marker (100 pb); lines from 1 to 11: MAP; PC, positive control: MAP K10.

gate the prevalence of the disease (Freitas et al., 2015). The low percentage of MAP isolation in this study was also observed in others, such as Dimareli-Malli et al. (2009); Medeiros et al. (2012) and Barad et al. (2014), which corroborates the low sensitivity of the isolation technique to individual paratuberculosis diagnosis. Furthermore, MAP from subclinical animals due to intermittent disposal and low number of bacteria in feces and milk (Whipple et al., 1991). Dimareli-Malli et al. (2013) studied the phenotypic and genotypic characteristics of MAP isolated from small ruminants and concluded that, for the primary isolation, only M7H11 medium

should be used, or even a combination of M7H11 and HEYM, which promotes the growth of the main types of MAP and reduces the period of incubation at 37 °C. In this study, no animals with clinical signs of the disease were observed and only HEYM medium was used for cultivation. Such data could have contributed to the reduced number of isolates obtained and the absence of strain S (sheep). On the other hand, the realization of molecular technique directly from milk samples may have partly compensated this need.

Studies on MAP typing isolated from goats in different countries found that most strains were type C (Sevilla et al., 2005; Sibley,

2005; De Juan et al., 2006; Fiorentino et al., 2012; Dimareli-Malli et al., 2013; Singh et al., 2015). Type C has a wide range of hosts, is commonly isolated from domestic and wild animals, including non-ruminants (Stevenson, 2015) and is the predominant type in cattle (Dimareli-Malli et al., 2013). In patients affected by Crohn's disease, MAP isolates have also been classified as type C (Stevenson, 2015).

The genetic differences between the S and C types reflected in phenotypic changes, such as growth rate, virulence and epidemiological characteristics (Whittington et al., 2001; Janagama et al., 2010). The genetic variability of MAP has important implications for the diagnosis and control of paratuberculosis. Genotyping must be included in the diagnosis of the disease in order to better study their survival mechanisms and virulence, and then suggest actions that can effectively control the disease.

Goat's milk is recognized for its nutritional value, and consumed mainly by people with health problems, elderly and children, particularly. Those with intolerance and gastrointestinal diseases lactose (Fonseca and Bruschi, 2009). The agent can survive in milk after heat treatment (Dimareli-Malli, 2010; Carvalho et al., 2012) and there is a strong suspicion que MAP can be the agent zoonotic, although there is controversy (Ahlstrom et al., 2015). In addition, there are economic losses due to the Decreased production of meat and milk of animals contaminated (Stehman, 1996; Oliveira et al., 2010). Thus demonstrates the importance of the results of this study.

MAP type C strain is present in dairy goat farms at Zona da Mata of Minas Gerais, where MAP typing isolated from dairy goats in Brazil was first reported.

Conflict of interest

There is no conflict of interest.

Acknowledgments

We thank to Fundação de Amparo à Pesquisa do Estado de Minas Gerais (FAPEMIG), Coordenação de Aperfeiçoamento de Pessoal de Nível Superior (CAPES) and Conselho Nacional de Desenvolvimento Científico e Tecnológico (CNPq) for financial support. Maria Aparecida Scatamburlo Moreira has CNPq scholarship. Besides INCT Livestock and CNPq – SAGRES Project: 457417/2012-9 for financial support and fellowships.

References

- Ahlstrom, C., Barkema, H.W., Stevenson, K., Zadoks, R.N., Biek, R., Kao, R., Trewby, H., Hauptstein, D., Kelton, D.F., Fecteau, G., 2015. Limitations of variable number of tandem repeat typing identified through whole genome sequencing of *Mycobacterium avium* subsp. *paratuberculosis* on a national and herd level. *BMC Genomics* 16, 1.
- Ayele, W.Y., Svastova, P., Roubal, P., Bartos, M., Pavlik, I., 2005. *Mycobacterium avium* subspecies *paratuberculosis* cultured from locally and commercially pasteurized cow's milk in the Czech Republic. *Appl. Environ. Microbiol.* 71, 1210–1214.
- Barad, D., Chandel, B., Dadawala, A., Chauhan, H., Kher, H., Shroff, S., Bhagat, A., Singh, S., Singh, P., Singh, A., 2014. Incidence of *Mycobacterium avium* subspecies *paratuberculosis* in Mehsani and Surti goats of Indian origin using multiple diagnostic tests. *J. Biol. Sci.* 14, 124.
- Biet, F., Sevilla, I.A., Cochar, T., Lefrançois, L.H., Garrido, J.M., Heron, I., Juste, R.A., McLuckie, J., Thibault, V.C., Supply, P., 2012. Inter- and intra-subtype genotypic differences that differentiate *Mycobacterium avium* subspecies *paratuberculosis* strains. *BMC Microbiol.* 12, 264.
- Carvalho, I., Pietralonga, P., Schwarz, D., Faria, A., Moreira, M., 2012. Short communication: recovery of viable *Mycobacterium avium* subspecies *paratuberculosis* from retail pasteurized whole milk in Brazil. *J. Dairy Sci.* 95, 6946–6948.
- Chiodini, R., 1984. Ruminant Paratuberculosis (Johne's Disease): Its Incidence in New England and Characterization of the Causative Organism. University Microfilms.
- Clarke, C., 1997. Paratuberculosis and molecular biology. *Vet. J.* 153, 245–247.
- Da Silva, H.W., Guimaraes, C.R.B., Oliveira, T.S., 2012. Aspectos da exploração da caprinocultura leiteira no Brasil. *Rev. Bras. Agric. Sustain. (RBAS)* 2, 121–125.
- De Juan, L., Alvarez, J., Aranaz, A., Rodriguez, A., Romero, B., Bezos, J., Mateos, A., Dominguez, L., 2006. Molecular epidemiology of Types I/III strains of *Mycobacterium avium* subspecies *paratuberculosis* isolated from goats and cattle. *Vet. Microbiol.* 115, 102–110.
- Dimareli-Malli, Z., Stevenson, K., Sarris, K., Sossidou, K., 2009. Study of microbiological and molecular typing aspects of paratuberculosis in sheep and goats in Northern Greece. *Transbound. Emerg. Dis.* 56, 285–290.
- Dimareli-Malli, Z., Mazaraki, K., Stevenson, K., Tsakos, P., Zdragas, A., Giantzi, V., Petridou, E., Heron, I., Vafeas, G., 2013. Culture phenotypes and molecular characterization of *Mycobacterium avium* subsp. *paratuberculosis* isolates from small ruminants. *Res. Vet. Sci.* 95, 49–53.
- Dimareli-Malli, Z., 2010. Detection of *Mycobacterium avium* subsp. *paratuberculosis* in milk from clinically affected sheep and goats. *Int. J. Appl. Res. Vet. Med.* 8, 44–50.
- Dubeuf, J.P., 2010. Characteristics and diversity of the dairy goat production systems and industry around the world. Structural, market and organisational conditions for their development. *Tecnol. Ciênc. Agric.* 4, 25–31.
- Florentino, M., Giuffrè, A., Cirone, K., Morsella, C., Alonso, B., Delgado, F., Paolicchi, F., 2012. First isolation of *Mycobacterium avium* subsp. *paratuberculosis* in a dairy goat in Argentina: pathology and molecular characterization. *Small Rumin. Res.* 108, 133–136.
- Fonseca, J.F., Bruschi, J.H., 2009. A caprinocultura leiteira no Brasil—Uma visão histórica. In: Fonseca, J.F., Bruschi, J.H. (Eds.), *Produção De Caprinos Na Região Da Mata Atlântica*. Embrapa Caprinos, Sobral, Ce, pp. 15–24.
- Freitas, T.D., de Azevedo, S.S., Silva, M.L.C.R., Júnior, F.G., Santos, C.D.S.A.B., Clementino, I., Amaral, F.R.C., Alves, C.J., 2015. Epidemiological characterization and risk factors associated with *Mycobacterium avium* subsp. *paratuberculosis* infection in dairy goats in the Brazilian semi-arid region. *Seminaria* 36, 267–276.
- Grant, I., O'Riordan, L., Ball, H., Rowe, M., 2001. Incidence of *Mycobacterium paratuberculosis* in raw sheep and goats' milk in England, Wales and Northern Ireland. *Vet. Microbiol.* 79, 123–131.
- Janagama, H.K., Bannantine, J.P., Kugadas, A., Jagtap, P., Higgins, L., Witthuhn, B.A., Sreevatsan, S., 2010. Iron-sparing response of *Mycobacterium avium* subsp. *paratuberculosis* is strain dependent. *BMC Microbiol.* 10, 268.
- Marsh, I., Whittington, R., Cousins, D., 1999. PCR-restriction endonuclease analysis for identification and strain typing of *Mycobacterium avium* subsp. *paratuberculosis* and *Mycobacterium avium* subsp. *avium* based on polymorphisms in IS1311. *Mol. Cell. Probes* 13, 115–126.
- Medeiros, J.M., Garino Junior, F., Almeida, A.P., Lucena, E.A., Riet-Correa, F., 2012. Paratuberculose em caprinos e ovinos no Estado da Paraíba. *Pesqui. Vet. Bras.* 32, 111–115.
- Mota, R.A., Peixoto, P.V., Yamasaki, E.M., Medeiros, E.S.d., Costa, M.M.d., Peixoto, R.M., Brito, M.F., 2010. Occurrence of paratuberculosis in buffaloes (*Bubalus bubalis*) in Pernambuco. *Pesqui. Vet. Bras.* 30, 237–242.
- Oliveira, D.M., Riet-Correa, F., Galiza, G.J., Assis, A.C., Dantas, A.F., Bandarra, P.M., Garino Jr., F., 2010. Paratuberculosis in goats and sheep in Brazil. *Pesqui. Vet. Bras.* 30, 67–72.
- Pillai, S., Jayarao, B., 2002. Application of IS900 PCR for detection of *Mycobacterium avium* subsp. *paratuberculosis* directly from raw milk. *J. Dairy Sci.* 85, 1052–1057.
- Sevilla, I., Singh, S., Garrido, J., Aduriz, G., Rodriguez, S., Geijo, M., Whittington, R., Saunders, V., Whitlock, R., Juste, R., 2005. Molecular typing of *Mycobacterium avium* subspecies *paratuberculosis* strains from different hosts and regions. *Rev. Sci. Tech.* 24, 1061.
- Sibley, J.A., 2005. Molecular Tools for the Characterization of *Mycobacterium Avium* subspecies *paratuberculosis*. University of Saskatchewan.
- Singh, A.V., Chauhan, D.S., Singh, A., Singh, P.K., Sohal, J.S., Singh, S.V., 2015. Application of IS1311 locus 2 PCR-REA assay for the specific detection of 'Bison type' *Mycobacterium avium* subspecies *paratuberculosis* isolates of Indian origin. *Indian J. Med. Res.* 141, 55.
- Sivakumar, P., Tripathi, B., Singh, N., 2005. Detection of *Mycobacterium avium* subsp. *paratuberculosis* in intestinal and lymph node tissues of water buffaloes (*Bubalus bubalis*) by PCR and bacterial culture. *Vet. Microbiol.* 108, 263–270.
- Stabel, J.R., 1997. An improved method for cultivation of *Mycobacterium paratuberculosis* from bovine fecal samples and comparison to three other methods. *J. Vet. Diagn. Invest.* 9, 375–380.
- Stehman, S., 1996. Paratuberculosis (Johne's disease) in sheep and goats: recommendations for diagnosis and control. In: *Proceedings of the Annual Meeting—United States Animal Health Association, United States Animal Health Association*, pp. 538–551.
- Stevenson, K., 2015. Genetic diversity of *Mycobacterium avium* subspecies *paratuberculosis* and the influence of strain type on infection and pathogenesis: a review. *Vet. Res.* 46, 1–13.
- Whipple, D.L., Callihan, D.R., Jarnagin, J.L., 1991. Cultivation of *Mycobacterium paratuberculosis* from bovine fecal specimens and a suggested standardized procedure. *J. Vet. Diagn. Invest.* 3, 368–373.
- Whittington, R., Marsh, I., Choy, E., Cousins, D., 1998. Polymorphisms in IS1311, an insertion sequence common to *Mycobacterium avium* and *M. avium* subsp. *paratuberculosis*, can be used to distinguish between and within these species. *Mol. Cell. Probes* 12, 349–358.
- Whittington, R., Marsh, I., Whitlock, R., 2001. Typing of IS1311 polymorphisms confirms that bison (*Bison bison*) with paratuberculosis in Montana are infected with a strain of *Mycobacterium avium* subsp. *paratuberculosis* distinct from that occurring in cattle and other domesticated livestock. *Mol. Cell. Probes* 15, 139–145.