

# Toxic effects of two essential oils and their constituents on the mealworm beetle, *Tenebrio molitor*

L.C. Martínez<sup>1\*</sup>, A. Plata-Rueda<sup>2</sup>, H.C. Colares<sup>3</sup>,  
J.M. Campos<sup>3</sup>, M.H. Dos Santos<sup>4</sup>, F.L. Fernandes<sup>2</sup>,  
J.E. Serrão<sup>5</sup> and J.C. Zanuncio<sup>1</sup>

<sup>1</sup>Departamento de Entomologia, Universidade Federal de Viçosa, 36570-000, Viçosa, Minas Gerais, Brasil: <sup>2</sup>Instituto de Ciências Agrárias, Universidade Federal de Viçosa, 38810-000, Viçosa, Minas Gerais, Brasil: <sup>3</sup>Departamento de Fitotecnia, Universidade Federal de Viçosa, 36570-000, Viçosa, Minas Gerais, Brasil: <sup>4</sup>Departamento de Química, Universidade Federal de Viçosa, 36570-000, Viçosa, Minas Gerais, Brasil: <sup>5</sup>Departamento de Biologia Geral, Universidade Federal de Viçosa, 36570-000, Viçosa, Minas Gerais, Brasil

## Abstract

The study identified insecticidal effects from the cinnamon and clove essential oils in *Tenebrio molitor* L. (Coleoptera: Tenebrionidae). The lethal concentrations (LC<sub>50</sub> and LC<sub>90</sub>), lethal time, and repellent effect on larvae, pupae, and adults of *T. molitor* after exposure to six concentrations of each essential oil and toxic compounds were evaluated. The chemical composition of the cinnamon oil was also determined and primary compounds were eugenol (10.19%), *trans*-3-carene-2-ol (9.92%), benzyl benzoate (9.68%), caryophyllene (9.05%), eugenyl acetate (7.47%),  $\alpha$ -phellandrene (7.18%), and  $\alpha$ -pinene (6.92%). In clove essential oil, the primary compounds were eugenol (26.64%), caryophyllene (23.73%), caryophyllene oxide (17.74%), 2-propenoic acid (11.84%),  $\alpha$ -humulene (10.48%),  $\gamma$ -cadinene (4.85%), and humulene oxide (4.69%). Cinnamon and clove essential oils were toxic to *T. molitor*. In toxic chemical compounds, eugenol have stronger contact toxicity in larvae, pupae, and adult than caryophyllene oxide, followed by  $\alpha$ -pinene,  $\alpha$ -phellandrene, and  $\alpha$ -humulene. In general, the two essential oils were toxic and repellent to adult *T. molitor*. Cinnamon and clove essential oils and their compounds caused higher mortality and repellency on *T. molitor* and, therefore, have the potential for integrated management programs of this insect.

**Keywords:** cinnamon, clove, lethal effect, gas chromatography, pest control, repellency index

(Accepted 16 November 2017; First published online 14 December 2017)

## Introduction

The mealworm beetle, *Tenebrio molitor* Linnaeus (Coleoptera: Tenebrionidae) is a pest of stored products such as starches, food

for cats and dogs, and pasta. This insect may also infest broken grains of *Zea mays* (L.) (Poales: Poaceae), *Triticum aestivum* (L.) (Poales: Poaceae), and *Glycine max* (L.) (Fabales: Fabaceae) (Punzo & Mutchmor, 1980; Fazolin *et al.*, 2007; Cosimi *et al.*, 2009). The presence of *T. molitor* in stored grain and bran can contaminate food with fragments of the body, feces, and indirectly by saprophytic microorganisms causing loss of food quality (Loudon, 1988; Schroeckenstein *et al.*, 1990; Barnes & Siva-Jothy, 2000). This insect causes losses up to 15% of grains and flour production worldwide (Dunkel, 1992; Flinn *et al.*, 2003; Neethirajan *et al.*, 2007).

\*Author for correspondence

Phone: +55 31 3899-4012

Fax: +55 31 3899-2108

E-mail: [lc.martinez@outlook.com](mailto:lc.martinez@outlook.com)

*Tenebrio molitor* is controlled primarily with chemical insecticides, but this method has restrictions against stored product insects (Shaaya *et al.*, 1997), due to residual toxicity and insect resistance (Isman, 2006), especially in countries with extensive cereal production for export and domestic consumption (Arthur, 1996; Shaaya *et al.*, 1997). Chemical control of this insect can be achieved by phosphine treatment; however, fumigants cannot kill the eggs of storage pests and several issues have been discussed in the employment of insecticides, such as residue, environment impact, and toxicity to humans (Arthur, 1996; Shaaya *et al.*, 1997; Isman, 2006). Economic, social, and environmental concerns have caused a gradual change to reduce chemical control in starches and stored products (Arthur, 1996; Zettler & Arthur, 2000; Isman, 2006). More selective and biodegradable products, including 'green pesticides', can reduce the use of synthetic chemicals in warehouses (Isman, 2000; Martínez *et al.*, 2015; Plata-Rueda *et al.*, 2017).

Plant essential oils have favorable ecotoxicological properties (low toxicity to humans, degradation, and lower environmental impact), making them suitable to managing insects in organic farming (Chermenskaya *et al.*, 2010; Zanoncio *et al.*, 2016). These oils are plants secondary metabolites and include alkaloids, amides, chalcones, phenols, flavones, lignans, neolignans, or kawapirones which are important in insect-plant relationships (Isman, 2000; Martínez *et al.*, 2015). In this sense, essential oils represent an alternative for pest control as repellents, deterrent of oviposition and feeding, growth regulators, and toxicity to insects with low pollution and quick degradation in the environment (Chermenskaya *et al.*, 2010; Zanoncio *et al.*, 2016; Plata-Rueda *et al.*, 2017). Various studies have focused on the possibility of using plant essential oils for application to stored grain to control insect pests (Zapata & Smaghe, 2010; Stefanazzi *et al.*, 2011; Jemâa *et al.*, 2012).

The cinnamon, *Cinnamomum zeylanicum* Blume (Lauraceae) is a tropical evergreen tree and grows wild in Sri Lanka, Madagascar, India, and Indochina. The inner bark of the tree is used in ethno-medicine and flavoring for foods (Bakkali *et al.*, 2008). Different studies showed that extracts and constituents of *C. zeylanicum* have antimicrobial, insecticidal, and acaricidal properties (Yang *et al.*, 2005; Fichi *et al.*, 2007; Shahverdi *et al.*, 2007). Clove, *Syzygium aromaticum* (L.) Merr at Perry (Myrtaceae) is an evergreen tree and native from Indonesia. Owing to its biological activities, clove oil finds extensive use in medicine, food, cosmetic items, and pest control (Ho *et al.*, 1994; Yoo *et al.*, 2005; Jirovetz *et al.*, 2006). Toxic effects of cinnamon and clove essential oils have been evaluated with success to control of agricultural pests (Regnault-Roger, *et al.*, 1993; Ho *et al.*, 1994; Isman, 2000). There are a variety of insecticides that have toxicological properties, deterrents, and repellents used for the control of *T. molitor*; however, essential oil of cinnamon and clove could be an alternative for the control in stored products. Identification of toxic compounds of cinnamon and clove is important in understanding toxicity as it relates to pest control. In this study, we hypothesized that cinnamon and clove essential oils and their constituents have insecticidal activity in *T. molitor*.

In this series of experiments, we evaluated the toxicity and repellency of cinnamon and clove essential oils and their main constituents against *T. molitor*, in order to contribute for the development of strategies for controlling this insect pest affecting an important source of food.

## Materials and methods

### Insects

*Tenebrio molitor* were obtained from the Laboratory of Biological Control of the Institute of Applied Biotechnology to Agriculture (BIOAGRO, Universidade Federal de Viçosa) in Viçosa, Minas Gerais State, Brasil. Adults of *T. molitor* were kept in plastic trays (60 cm long × 40 cm wide × 12 cm) and maintained at 25 ± 1°C, 70 ± 10% RH and 12:12 h L:D photoperiod. These insects were fed *ad libitum* with wheat bran (12% protein, 2% lipids, 75% carbohydrates, and 11% mineral/sugar), pieces of sugarcane, *Saccharum officinarum* (L.) (Poaceae) and chayote *Sechium edule* (Jacq.) Swartz (Cucurbitaceae). Sheets of paper were placed on the substrate to facilitate oviposition. Healthy larvae (last instar larval), pupae, and adults of *T. molitor* of 48 h old were chosen for the bioassays.

### Essential oils

The essential oils of cinnamon, *C. zeylanicum* and clove, *S. aromaticum* were obtained from Ferquima Industry & Commerce Ltda. (Vargem Grande Paulista, São Paulo State, Brazil), produced in industrial scale by hydrodistillation drag of water vapor (Dapkevicius *et al.*, 1998).

### Identification of essential oil compounds

Quantitative analyses of the cinnamon and clove essential oils were performed in quadruplicate using a gas chromatograph (GC-17A series instrument, Shimadzu, Kyoto, Japan) equipped with a flame ionization detector. The following chromatographic conditions were used: a fused silica capillary column (30 m × 0.22 mm) with a DB-5 bonded phase (0.25 µm film thickness); carrier gas N<sub>2</sub> at a flow rate of 1.8 ml min<sup>-1</sup>; injector temperature 220°C; detector temperature 240°C; column temperature programmed to begin at 40°C (remaining isothermal for 2 min) and then to increase at 3°C min<sup>-1</sup> to 240°C (remaining isothermal at 240°C for 15 min); injection volume 1.0 µl (1% w/v in CH<sub>2</sub>Cl<sub>2</sub>); split ratio 1:10; column pressure 115 kPa.

The compounds were identified using a gas chromatograph coupled with a mass detector GC/MS (GCMS-QP 5050A; Shimadzu, Kyoto, Japan). The injector and detector temperatures were 220 and 300°C, respectively. The initial column temperature was 40°C for 3 min, with a programmed temperature increase of 3°C min<sup>-1</sup> to 300°C where it was maintained for 25 min. The split mode ratio was 1:10. One microliter of each essential oil containing 1% (w/v in dichloromethane) was injected; helium was used as the carrier gas with a flow rate constant of 1.8 ml<sup>-1</sup> on the Rtx<sup>®</sup>-5MS capillary column (30 m, 0.25 mm × 0.25 µm; Bellefonte, PA, USA) using the Crossbond<sup>®</sup> stationary phase (35% diphenyl-65% dimethyl polysiloxane). Mass spectrometer was programmed to detect masses in the range of 29–450 Da with 70 eV ionization energy. Compounds were identified by comparisons of the mass spectra with those available in the NIST08, NIST11 library and Wiley Spectroteca Data Base (7th edition), and by the Retention indices.

### Toxicity of essential oils

The essential oil efficacy was determined by calculating the lethal concentration (LC<sub>50</sub> and LC<sub>90</sub>) values under laboratory

conditions and conducted in triplicate. Six concentrations of cinnamon and clove essential oils besides the control (acetone) were adjusted in 1 ml of stock solution (essential oil and acetone): 1, 2, 4, 8, 16, and 32% (w/v). Aliquots were taken from the stock solution and mixed with acetone in 5 ml glass vials. Different concentrations of each essential oil were applied in 1 µl solution on the thorax of larva, pupa, and adult of *T. molitor*, using a micropipette. For each developmental stage, 50 insects were used per concentration and placed individually in Petri dishes (Ø 90 mm × 15 mm) with perforated cap for ventilation and an absorbent paper, fed with chayote and sugarcane *ad libitum* (larvae and adults) and maintained in the dark. The number of dead insects was counted after essential oil exposure for 48 h.

#### Toxicity of commercial compounds of two essential oils in *T. molitor*

Major constituents of the cinnamon and clove essential oils including eugenol, caryophyllene oxide, α-humulene, α-phellandrene, and α-pinene were tested for toxic effects and obtained commercially. Eugenol (purity 99%), caryophyllene oxide (purity 96%), α-humulene (purity 96%), α-phellandrene (purity 85%), and α-pinene (purity 98%) were purchased from Sigma-Aldrich (St. Louis, MO, USA). Six different concentrations of the commercial compounds besides the control (acetone) were adjusted in 1 ml of stock solution (treatment and acetone) used to calculate the lethal LC<sub>50</sub> and LC<sub>90</sub> concentrations: 2, 4, 8, 16, 32, and 64 µg insect<sup>-1</sup>. For each treatment, aliquots were taken from the stock solution and mixed with acetone in 5 ml glass vials. Different concentrations of the each treatment were applied in 1 µl solution on the thorax of larva, pupa, and adult of *T. molitor*. Individuals were placed in Petri dishes and fed with natural diet (10 g wheat bran + 10 g sugarcane in the ratio 1 : 1). A total of 50 larvae, 50 pupae, and 50 adults were used for each concentration and mortality was evaluated for 48 h.

#### Comparison of the LT<sub>50</sub> values of the essential oils and their major compounds

Toxicity of cinnamon and clove essential oils, and commercially obtained eugenol, caryophyllene oxide, α-humulene, α-phellandrene, and α-pinene at the calculated LC<sub>50</sub> concentration was compared. Acetone was used as a control. For the LC<sub>50</sub> of each compound, 1 µl was applied on the thorax of larvae, pupae, and adults of *T. molitor* using a micropipette. Insects were individualized in Petri dishes with wheat bran and sugarcane. A total of 240 larvae, 240 pupae, and 240 adults were used for each treatment, with a total of four replicates. Mortality was recorded every 6 h for 48 h, and estimated lethal time values for 50% mortality (LT<sub>50</sub>) were compared.

#### Repellency effects of the essential oils and their major compounds

Four Petri dishes (12 × 1.5 cm) were used as an arena, connected to a central board with plastic tubes (diameter 2 cm) at an angle of 45°. The other dishes were distributed around them in equidistant distances and two plates were put together symmetrically opposed (fig. 1). Two hundred and forty individuals (120 larvae and 120 adults) of *T. molitor* were used in this experiment. In each assay replicate, 20 insects were released in the central board and the control group received sugarcane and chayote. A total of 5 µl of the estimated

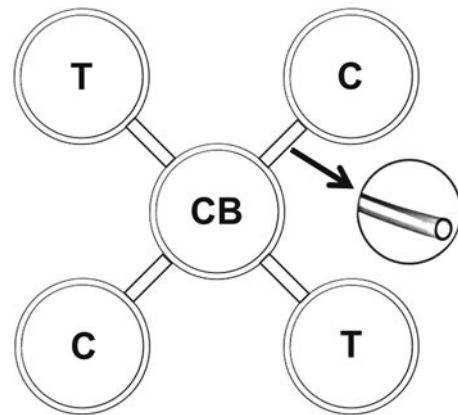


Fig. 1. Schematic drawing of four Petri dishes used as an arena, connected to a central board (CB) with plastic tubes at an angle of 45°. Treatment (T) and control (C) were distributed in equidistant distances and symmetrically opposed. Not drawn to scale.

LC<sub>50</sub> lethal concentration of each essential oil and toxic compounds were applied on absorbent filter paper (2 × 2 cm) placed in two opposite plates used as treatment, and two opposite ones with 5 µl of distilled water on absorbent filter paper represented the control. Four replicates per treatment and control were evaluated by the number of individuals per plate after 12 h calculating the repellency index (RI):  $RI = 2G / (G + P)$ , where *G* is the percentage of insects in the treatment and *P* is the percentage of insects in control. Treatments were classified as neutral if the index was equal to one (1); repellent, higher than one (1), and; attractive lower than one (1).

#### Statistical analyses

Lethal concentration (LC<sub>50</sub> and LC<sub>90</sub>) and their confidence limits for cinnamon and clove essential oils and compounds were determined by logistic regression in dose–response assays based on the concentration Probit–mortality (Finney, 1964) using XLSTAT-PRO (v.7.5) program for Windows (XLSTAT, 2004). Student's *t* test was used for pairwise comparisons regarding lethal time effects in *T. molitor* using SAS User software (v. 9.0) for Windows (SAS, 2002).

## Results

#### Identification of essential oil compounds

A total of 23 compounds were identified in the two essential oils, which accounted 96–97% of the total composition (fig. 2, table 1). The primary compounds of the essential oil of cinnamon were eugenol (10.19%), *trans*-3-carene-2-ol (9.92%), benzyl benzoate (9.68%), caryophyllene (9.05%), eugenyl acetate (7.47%), α-phellandrene (7.18%), α-pinene (6.92%), cinnamyl acetate (6.91%), saffrole (5.51%), nerolidol (5.02%), terpinolene (4.35%), cinnamaldehyde (4.12%), linalol (2.87%), β-pinene (2.43%), terpineol (2.11%), α-copaene (1.96%), myrcene (1.95%), and camphene (1.31%). For clove essential oil, the primary compounds were eugenol (26.64%), caryophyllene (23.73%), caryophyllene oxide (17.74%), 2-propenoic acid (11.84%), α-humulene (10.48%), γ-cadinene (4.85%), and humulene oxide (4.69%).

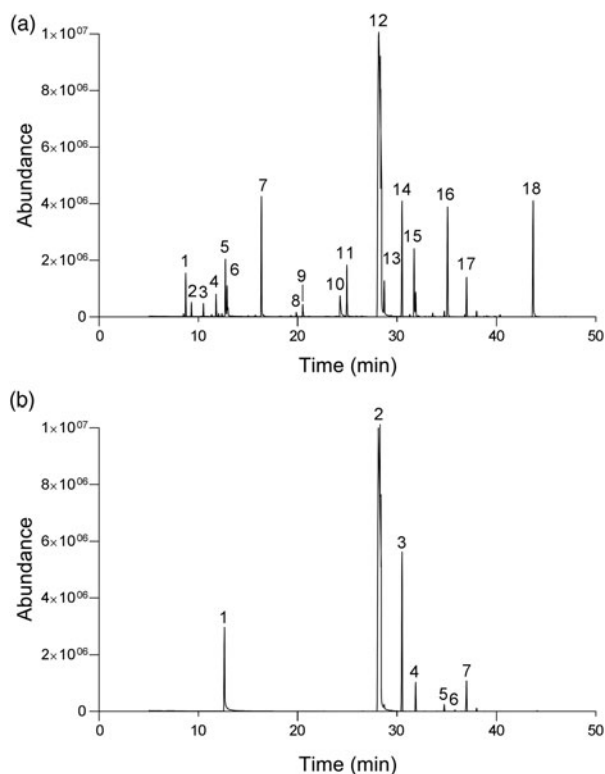


Fig. 2. Gas chromatogram profiles of peak retention of compounds of the cinnamon and clove essential oils. (a) Cinnamon:  $\alpha$ -pinene (1), camphene (2),  $\beta$ -pinene (3), myrcene (4),  $\alpha$ -phellandrene (5), terpinolene (6), *trans*-3-carene-2-ol (7), linalol (8),  $\alpha$ -terpineol (9), cinnamaldehyde (10), saffrole (11), eugenol (12), copaene (13), caryophyllene (14), cinnamyl acetate (15), eugenyl acetate (16), nerolidol (17), benzyl benzoate (18). (b) Clove: 2-propenoic acid (1), eugenol (2), caryophyllene (3),  $\alpha$ -humulene (4),  $\gamma$ -cadinene (5), caryophyllene oxide (6), humulene oxide (7).

#### Toxicity of essential oils

Mortality of *T. molitor* was obtained with 16 and 32% (w/v) of each essential oil and two different lethal concentration levels were estimated by Probit ( $\chi^2$ ,  $P < 0.0001$ ) (table 2). The  $LC_{50}$  and  $LC_{90}$  values indicated that cinnamon essential oil was the most toxic to *T. molitor* larvae ( $LC_{50} = 30.4$   $\mu$ g and  $LC_{90} = 55.1$   $\mu$ g;  $\chi^2 = 99.76$ ,  $df = 5$ ), followed by clove oil ( $LC_{50} = 35.1$   $\mu$ g and  $LC_{90} = 67.2$   $\mu$ g;  $\chi^2 = 60.43$ ,  $df = 5$ ). In contrast, clove essential oil was most toxic to *T. molitor* pupae with  $LC_{50} = 6.45$   $\mu$ g and  $LC_{90} = 14.6$   $\mu$ g ( $\chi^2 = 60.43$ ,  $df = 5$ ) followed by cinnamon oil with  $LC_{50} = 10.7$   $\mu$ g and  $LC_{90} = 20.9$   $\mu$ g ( $\chi^2 = 74.74$ ,  $df = 5$ ). Clove essential oil was the most toxic to *T. molitor* adults with  $LC_{50} = 21.6$   $\mu$ g and  $LC_{90} = 44.5$   $\mu$ g ( $\chi^2 = 12.39$ ,  $df = 5$ ) and cinnamon oil with  $LC_{50} = 29.8$   $\mu$ g and  $LC_{90} = 56.03$   $\mu$ g ( $\chi^2 = 17.81$ ,  $df = 5$ ). Mortality was always <1% in the control.

#### Toxicity of commercial compounds of two essential oils in *T. molitor*

The toxicity of commercially obtained eugenol, caryophyllene oxide,  $\alpha$ -humulene,  $\alpha$ -phellandrene, and  $\alpha$ -pinene in

*T. molitor* was estimated by Probit ( $\chi^2$ ,  $P < 0.0001$ ) and evaluated at different concentrations (table 3). To larva stage, dose-response bioassays showed results with eugenol with  $LC_{50} = 9.15$  (7.84–10.7)  $\mu$ g and  $LC_{90} = 18.9$   $\mu$ g (16.4–22.6), followed by caryophyllene oxide with  $LC_{50} = 9.21$  (7.59–11.1)  $\mu$ g and  $LC_{90} = 22.9$  (19.7–27.9)  $\mu$ g,  $\alpha$ -pinene with  $LC_{50} = 14.02$  (12.1–16.3)  $\mu$ g and  $LC_{90} = 27.16$  (23.7–32.0)  $\mu$ g,  $\alpha$ -humulene with  $LC_{50} = 15.2$  (13.2–17.8)  $\mu$ g and  $LC_{90} = 30.9$  (26.8–36.8)  $\mu$ g, and  $\alpha$ -phellandrene with  $LC_{50} = 17.09$  (14.7–20.1)  $\mu$ g and  $LC_{90} = 34.6$  (29.9–41.6)  $\mu$ g. The  $LC_{50}$  and  $LC_{90}$  values indicated that eugenol was toxic to pupae with  $LC_{50} = 13.4$  (11.6–15.5)  $\mu$ g and  $LC_{90} = 26.1$  (22.9–30.6)  $\mu$ g, followed by caryophyllene oxide with  $LC_{50} = 14.6$  (12.5–17.2)  $\mu$ g and  $LC_{90} = 30.9$  (26.7–37.1)  $\mu$ g,  $\alpha$ -pinene with  $LC_{50} = 17.5$  (15.1–20.8)  $\mu$ g and  $LC_{90} = 35.5$  (30.6–43.0)  $\mu$ g,  $\alpha$ -phellandrene with  $LC_{50} = 18.7$  (16.3–21.8)  $\mu$ g and  $LC_{90} = 35.2$  (30.7–41.9)  $\mu$ g, and  $\alpha$ -humulene with  $LC_{50} = 21.4$  (18.5–25.4)  $\mu$ g and  $LC_{90} = 40.4$  (34.6–49.2)  $\mu$ g. To adult stage, increased mortality was observed following application of caryophyllene oxide with  $LC_{50} = 25.4$  (21.9–30.4)  $\mu$ g and  $LC_{90} = 54.5$  (46.3–67.2)  $\mu$ g, followed by eugenol with  $LC_{50} = 26.6$  (23.2–31.4)  $\mu$ g and  $LC_{90} = 53.7$  (46.1–65.2)  $\mu$ g,  $\alpha$ -phellandrene with  $LC_{50} = 27.5$  (24.3–31.9)  $\mu$ g and  $LC_{90} = 51.6$  (44.9–61.2)  $\mu$ g,  $\alpha$ -pinene with  $LC_{50} = 29.9$  (26.1–35.4)  $\mu$ g and  $LC_{90} = 56.4$  (48.4–68.5)  $\mu$ g, and  $\alpha$ -humulene with  $LC_{50} = 31.8$  (27.9–37.4)  $\mu$ g and  $LC_{90} = 56.7$  (48.9–68.4)  $\mu$ g. Mortality was always <1% in the control.

#### Comparison of the $LT_{50}$ values of the essential oils and their major compounds

Larvae, pupae, and adults of *T. molitor* applied with  $LC_{50}$  concentration of cinnamon and clove essential oils vs. toxic compounds showed lethal effects at different time points (fig. 3). However,  $LT_{50}$  values showed that clove oil took longer to kill insects than the cinnamon essential oil. At a high  $LC_{50}$  concentration of cinnamon oil, eugenol took longer to kill the larvae ( $t = 5.47$ ,  $P < 0.001$ ), pupae ( $t = 3.98$ ,  $P < 0.001$ ), and adults ( $t = 3.96$ ,  $P < 0.001$ ) with  $LT_{50}$  values of  $32.6 \pm 0.86$ ,  $28.3 \pm 0.18$ , and  $44.6 \pm 0.85$  h, respectively (fig. 3a–c);  $\alpha$ -phellandrene took less to kill the larvae ( $t = 5.51$ ,  $P < 0.001$ ), pupae ( $t = 4.17$ ,  $P < 0.001$ ), and adults ( $t = 4.88$ ,  $P < 0.001$ ) with  $LT_{50}$  values of  $45.6 \pm 0.52$ ,  $45.6 \pm 0.17$ , and  $49.7 \pm 0.11$  h, respectively (fig. 3d–f); and  $\alpha$ -pinene took longer to kill the larvae ( $t = 4.45$ ,  $P < 0.001$ ), pupae ( $t = 3.96$ ,  $P < 0.001$ ), and adults ( $t = 5.16$ ,  $P < 0.001$ ) with  $LT_{50}$  values of  $47.7 \pm 0.27$ ,  $48.8 \pm 0.43$ , and  $48.9 \pm 0.79$  h, respectively (fig. 3g–i).

In clove oil, eugenol took longer to kill the larvae ( $t = 4.59$ ,  $P < 0.001$ ), pupae ( $t = 3.71$ ,  $P < 0.001$ ), and adults ( $t = 5.08$ ,  $P < 0.001$ ) with  $LT_{50}$  values of  $30.1 \pm 0.25$ ,  $26.7 \pm 0.56$ , and  $40.3 \pm 0.37$  h, respectively; caryophyllene took less to kill the larvae ( $t = 3.93$ ,  $P < 0.001$ ), pupae ( $t = 7.31$ ,  $P < 0.001$ ), and adults ( $t = 5.13$ ,  $P < 0.001$ ) with  $LT_{50}$  values of  $40.3 \pm 0.45$ ,  $24.4 \pm 0.89$ , and  $36.7 \pm 0.34$  h, respectively; and  $\alpha$ -humulene took longer to kill the larvae ( $t = 3.85$ ,  $P < 0.001$ ), pupae ( $t = 3.91$ ,  $P < 0.001$ ), and adults ( $t = 4.16$ ,  $P < 0.001$ ) with  $LT_{50}$  values of  $47.5 \pm 0.45$ ,  $46.1 \pm 0.53$ , and  $43.6 \pm 0.36$  h, respectively.

#### Repellency effects of the essential oils and their major compounds

The larvae of *T. molitor* RI by cinnamon essential oil and compounds with concentrations estimated for the  $LC_{50}$  values differ between them (table 4). Eugenol was the repellent (RI =  $1.10 \pm 0.05$ ), while  $\alpha$ -phellandrene (RI =  $0.89 \pm 0.08$ ),  $\alpha$ -pinene (RI =  $0.87 \pm 0.09$ ), and cinnamon oil (RI =  $0.83 \pm 0.04$ )

Table 1. Chemical composition of cinnamon and clove essential oil.

Compound	$R_i$	Mean composition (% area)		$R_t$	MM	$m/z$
		Cinnamon	Clove			
$\alpha$ -Pinene	943	6.92		8.30	136	121.10
Camphene	943	1.31		9.07	136	121.10
$\beta$ -Pinene	948	2.43		10.28	136	105.05
Myrcene	958	1.95		11.16	136	83.95
$\alpha$ -Phellandrene	969	7.18		11.49	136	136.05
Terpinolene	919	4.35		12.15	136	136.05
2-Propenoic acid	995		11.84	12.26	130	87.05
<i>trans</i> -3-Caren-2-ol	1052	9.92		12.60	152	134.05
Linalol	1136	2.87		16.11	154	121.10
$\alpha$ -Terpineol	1143	3.11		20.30	154	136.05
Cinnamaldehyde	1189	4.12		24.05	132	132.00
Safrole	1327	5.51		24.70	152	162.00
Eugenol	1392	10.19	26.64	27.90	164	164.00
Copaene	1221	1.96		28.55	204	164.00
Caryophyllene	1494	9.05	23.73	30.32	204	133.05
Cinnamyl acetate	1367	6.91		31.53	176	134.00
$\alpha$ -Humulene	1579		10.48	31.75	204	147.05
$\gamma$ -Cadinene	1469		4.85	34.50	204	204.05
Eugenyl acetate	1552	7.47		34.83	206	164.00
Caryophyllene oxide	1507		17.74	36.79	220	109.10
Nerolidol	1554	5.02		36.81	220	109.05
Humulene oxide	1590		4.69	37.56	220	109.05
Benzyl benzoate	1733	9.68		46.30	212	211.95

MM, molecular mass;  $R_i$ , relative intensity;  $R_t$ , retention indices;  $R_t$ , retention time;  $m/z$ , molecular weight.

were attractant. The RI for adults of *T. molitor* differed with the concentration of the cinnamon essential oil and compounds, using the estimated  $LC_{90}$  values (table 4). Eugenol was the most repellent ( $RI = 1.10 \pm 0.07$ ), followed by that of the cinnamon oil ( $RI = 1.06 \pm 0.03$ ), while  $\alpha$ -phellandrene ( $RI = 0.90 \pm 0.05$ ), and  $\alpha$ -pinene ( $RI = 0.87 \pm 0.04$ ) were attractant.

The larvae of *T. molitor* RI by clove essential oil and compounds with concentrations estimated for the  $LC_{50}$  values differ between them (table 4). Caryophyllene oxide was repellent ( $RI = 1.06 \pm 0.04$ ), while eugenol ( $RI = 0.98 \pm 0.09$ ), clove oil ( $RI = 0.84 \pm 0.05$ ), and  $\alpha$ -humulene were attractant ( $RI = 0.74 \pm 0.04$ ). The RI for adults of *T. molitor* differed with the concentration of the clove essential oil and compounds, using the estimated  $LC_{90}$  values (table 4). The clove essential oil ( $RI = 1.10 \pm 0.07$ ) was repellent, while caryophyllene oxide ( $RI = 1.01 \pm 0.06$ ) was neutral. The compounds eugenol ( $RI = 0.99 \pm 0.08$ ) and  $\alpha$ -humulene ( $RI = 0.84 \pm 0.05$ ) were attractant.

## Discussion

Toxicity and repellency of two essential oils and their compounds against the mealworm beetle, *T. molitor* were determined from the bioassays in the laboratory conditions. Cinnamon and clove essential oils caused substantial mortality and repellency in larva, pupa, and adult stages. The best results were obtained with concentrations of 16 and 32% in *T. molitor* as reported for other stored grain pests according to the concentration of these products (Zettler & Arthur, 2000; Haddi *et al.*, 2015). The susceptibility of stored pest products such as *Sitophilus oryzae* Linnaeus (Coleoptera: Curculionidae) and *Callosobruchus chinensis* Linnaeus (Coleoptera: Chrysomelidae) by cinnamon, and *Sitophilus zeamais* Motschusky (Coleoptera: Curculionidae) and *Tribolium castaneum* Hersbt (Coleoptera: Tenebrionidae) by clove may

vary with the method of exposure (contact or fumigation) (Ho *et al.*, 1994; Kim *et al.*, 2003; Correa *et al.*, 2015).

Different concentrations of the cinnamon and clove essential oils showed toxic effects on larva, pupa, and adult of *T. molitor* 48 h after topical application. The dose–response bioassay confirmed toxicity against *T. molitor*, reaching a 90% mortality rate. Increasing concentrations of cinnamon and clove essential oil on different insects have shown immediate toxic responses within 12 h of application (Ho *et al.*, 1994; Choi *et al.*, 2003; Kim *et al.*, 2003; Lee *et al.*, 2008). Comparing the contact toxicity of cinnamon and clove essential oils on developmental stages of *T. molitor*, the pupa was significantly more susceptible followed by adult and larva. The  $LC_{50}$  of cinnamon and clove essential oils of pupa (10.7 and 6.45  $\mu\text{g insect}^{-1}$ , respectively), adult (29.8 and 21.6  $\mu\text{g insect}^{-1}$ , respectively), and larva (30.4 and 35.1  $\mu\text{g insect}^{-1}$ , respectively) indicate that small quantities of these essential oils are toxic in all stages of development of this insect.

The chemical composition of cinnamon and clove essential oils revealed 23 compounds detected, identified, and quantified in terms of relative percentages. In particular, eugenol, *trans*-3-caren-2-ol, benzyl benzoate, caryophyllene, eugenyl acetate,  $\alpha$ -phellandrene, and  $\alpha$ -pinene were the main compounds that were detected in cinnamon oil and eugenol, caryophyllene, caryophyllene oxide, 2-propenoic acid, and  $\alpha$ -humulene from clove oil. The results are in accordance with those of previous reports on monoterpenes obtained in essential oils (Simić *et al.*, 2004; Chaieb *et al.*, 2007; Goni *et al.*, 2009). Monoterpenes, with sesquiterpenes, are the main constituents of essential oils extracted from plants, including fruits, vegetables, spices, and herbs (Loza-Tavera, 1999). They are products of the secondary metabolism of plants, although specialized classes occur in some animals and microorganisms (Banthorpe *et al.*, 1972). Monoterpenes are a class of terpenes that consist of two isoprene units, with molecular

Table 2. Lethal concentrations of cinnamon and clove essential oil against different developmental stages of *Tenebrio molitor* after 48 h exposure.

EO	IS	LC	EV ( $\mu\text{g insect}^{-1}$ )	CI ( $\mu\text{g insect}^{-1}$ )	$\chi^2$
Cinnamon	Larva	LC <sub>50</sub>	30.41	26.75–35.58	99.76
		LC <sub>90</sub>	55.10	47.68–66.08	
	Pupa	LC <sub>50</sub>	10.77	9.738–11.94	74.74
		LC <sub>90</sub>	20.96	19.02–23.48	
	Adult	LC <sub>50</sub>	29.84	26.08–35.22	17.81
		LC <sub>90</sub>	56.03	48.16–67.87	
Clove	Larva	LC <sub>50</sub>	35.19	29.76–43.83	60.43
		LC <sub>90</sub>	67.23	55.70–86.35	
	Pupa	LC <sub>50</sub>	6.452	5.709–7.302	61.78
		LC <sub>90</sub>	14.68	13.18–16.66	
	Adult	LC <sub>50</sub>	21.69	19.22–24.89	12.39
		LC <sub>90</sub>	44.59	39.15–52.25	

EO, essential oil; IS, insect stage; LC<sub>50</sub> and <sub>90</sub>, lethal concentration causing 50 and 90% mortality; EV, estimated value; CI, confidence interval;  $\chi^2$ , chi-squared value for the lethal concentrations and fiducial limits based on a log scale with significance level at  $P < 0.001$ .

formula of C<sub>10</sub>H<sub>16</sub>, and may be linear (acyclic) or contain rings. Defensive role in plants of simple monoterpenes have been demonstrated as for more complex compounds (Lerdau *et al.*, 1994). In this study, the main compounds of cinnamon and clove essential oils are monoterpenes and may provide a solution to protect plants or stored products against insect attack.

Chemical compounds of cinnamon and clove essential oils demonstrated toxic activity on different developmental stages of *T. molitor*. Eugenol have stronger contact toxicity in larvae (LC<sub>50</sub> = 9.15  $\mu\text{g}$ ), pupae (LC<sub>50</sub> = 13.4  $\mu\text{g}$ ), and adult (LC<sub>50</sub> = 26.6  $\mu\text{g}$ ), than caryophyllene oxide in larvae (LC<sub>50</sub> = 9.21  $\mu\text{g}$ ), pupae (LC<sub>50</sub> = 14.6  $\mu\text{g}$ ), and adult (LC<sub>50</sub> = 25.4  $\mu\text{g}$ ), followed by  $\alpha$ -pinene in larvae (LC<sub>50</sub> = 14.0  $\mu\text{g}$ ), pupae (LC<sub>50</sub> = 17.5  $\mu\text{g}$ ), and adult (LC<sub>50</sub> = 29.9  $\mu\text{g}$ );  $\alpha$ -phellandrene in larvae (LC<sub>50</sub> = 17.0  $\mu\text{g}$ ), pupae (LC<sub>50</sub> = 18.7  $\mu\text{g}$ ), and adult (LC<sub>50</sub> = 27.5  $\mu\text{g}$ ); and  $\alpha$ -humulene in larvae (LC<sub>50</sub> = 15.2  $\mu\text{g}$ ), pupae (LC<sub>50</sub> = 21.4  $\mu\text{g}$ ), and adult (LC<sub>50</sub> = 31.8  $\mu\text{g}$ ). Eugenol, caryophyllene oxide,  $\alpha$ -humulene,  $\alpha$ -phellandrene, and  $\alpha$ -pinene have been highly toxic to *C. chinensis*, *Heliothis virescens* (F.) (Lepidoptera: Noctuidae), *S. oryzae*, *S. zeamais* (Coleoptera: Curculionidae), and *T. castaneum* (Ho *et al.*, 1994; Huang *et al.*, 2002) at different developmental stages as well as other insects (Gunasena *et al.*, 1988; Huang *et al.*, 2002; Park *et al.*, 2003). Our results showed that *T. molitor* was more susceptible in the pupal stage followed by larvae and adults exposed to eugenol, caryophyllene oxide,  $\alpha$ -humulene,  $\alpha$ -phellandrene, and  $\alpha$ -pinene. One possible explanation for the developmental stages difference is that efficacy may be affected by the penetration of the cinnamon and clove compounds into the body and the ability of the insect to metabolize these compounds.

The mechanisms of toxic action of monoterpenoids such as eugenol, caryophyllene oxide,  $\alpha$ -humulene,  $\alpha$ -phellandrene, and  $\alpha$ -pinene are unknown. However, the insects exposed to the toxic compounds displayed altered locomotion activity, and muscle contractions in legs and abdomen that were observed at high concentrations in LC<sub>50</sub> test. In some individuals, the paralysis was constant with concentrations near the LC<sub>50</sub> without recovery signs. Paralysis and muscle contractions in individuals of *T. molitor* at LC<sub>50</sub> followed by death can be

Table 3. Lethal concentrations of the cinnamon and clove oil constituents on different developmental stages of *Tenebrio molitor* after 48 h exposure.

Compounds	IS	LC	EV ( $\mu\text{g insect}^{-1}$ )	CI ( $\mu\text{g insect}^{-1}$ )	$\chi^2$
Eugenol	Larva	LC <sub>50</sub>	9.154	7.849–10.74	21.12
		LC <sub>90</sub>	18.96	16.43–22.68	
	Pupa	LC <sub>50</sub>	13.41	11.67–15.52	31.75
		LC <sub>90</sub>	26.13	22.94–30.64	
	Adult	LC <sub>50</sub>	26.61	23.20–31.43	15.28
		LC <sub>90</sub>	53.73	46.10–65.25	
Caryophyllene oxide	Larva	LC <sub>50</sub>	9.217	7.590–11.10	24.24
		LC <sub>90</sub>	22.99	19.71–27.90	
	Pupa	LC <sub>50</sub>	14.64	12.54–17.28	33.86
		LC <sub>90</sub>	30.96	26.73–37.19	
	Adult	LC <sub>50</sub>	25.46	21.99–30.42	15.12
		LC <sub>90</sub>	54.59	46.38–67.25	
$\alpha$ -Humulene	Larva	LC <sub>50</sub>	15.27	13.20–17.87	10.47
		LC <sub>90</sub>	30.95	26.88–36.82	
	Pupa	LC <sub>50</sub>	21.41	18.50–25.40	20.08
		LC <sub>90</sub>	40.45	34.69–49.23	
	Adult	LC <sub>50</sub>	31.85	27.94–37.45	8.97
		LC <sub>90</sub>	56.76	48.96–68.47	
$\alpha$ -Phellandrene	Larva	LC <sub>50</sub>	17.09	14.73–20.11	12.58
		LC <sub>90</sub>	34.65	29.95–41.64	
	Pupa	LC <sub>50</sub>	18.75	16.34–21.86	35.61
		LC <sub>90</sub>	35.27	30.70–41.97	
	Adult	LC <sub>50</sub>	27.56	24.36–31.94	12.01
		LC <sub>90</sub>	51.61	44.94–61.28	
$\alpha$ -Pinene	Larva	LC <sub>50</sub>	14.02	12.19–16.30	5.19
		LC <sub>90</sub>	27.16	23.73–32.08	
	Pupa	LC <sub>50</sub>	17.58	15.14–20.80	18.63
		LC <sub>90</sub>	35.56	30.60–43.02	
	Adult	LC <sub>50</sub>	29.92	26.10–35.41	11.57
		LC <sub>90</sub>	56.44	48.41–68.59	

IS, insect stage; LC<sub>50</sub> and <sub>90</sub>, lethal concentration causing 50 and 90% mortality; EV, estimated value; CI, confidence interval;  $\chi^2$ , chi-squared value for the lethal concentrations and fiducial limits based on a log scale with significance level at  $P < 0.001$ .

explained by the toxic effect in the nervous system. Different studies have shown that neurotoxic effects of insects exposed to monoterpenoids can cause blockade of octopamine receptor binding sites (Livingstone *et al.*, 1980; Enan, 2001). In this context, octopamine induces hyperextension of the legs and abdomen by increasing the frequency of excitatory postsynaptic potentials received by the appropriate abdominal motor neurons (Livingstone *et al.*, 1980; Enan, 2001). Octopamine has a broad spectrum of biological roles in insects, acting as a neurotransmitter, neurohormone and circulating neurohormone neuromodulator (Orchard, 1982; Kostyukovsky *et al.*, 2002; Farooqui, 2007). In insects, there is some evidence suggesting a role in neuromuscular transmission (Candy, 1978; Whim & Evans, 1988), but is not to say that octopamine is the neuromuscular transmitter, but rather that it may possess a modulating influence on nerve–muscle interaction. The presence of the monoterpenoids in cinnamon and clove essential oils may be responsible for the neurotoxic effect in *T. molitor* and may cause rapid mortality as reported to *S. zeamais* with eugenol, *H. virescens* with caryophyllene oxide, *C. chinensis* with  $\alpha$ -humulene,  $\alpha$ -phellandrene, and  $\alpha$ -pinene causing hyperactivity, hyperextension of the legs and abdomen and rapid knock-down effect or immobilization (Gunasena *et al.*, 1988; Huang *et al.*, 2002; Park *et al.*, 2003).

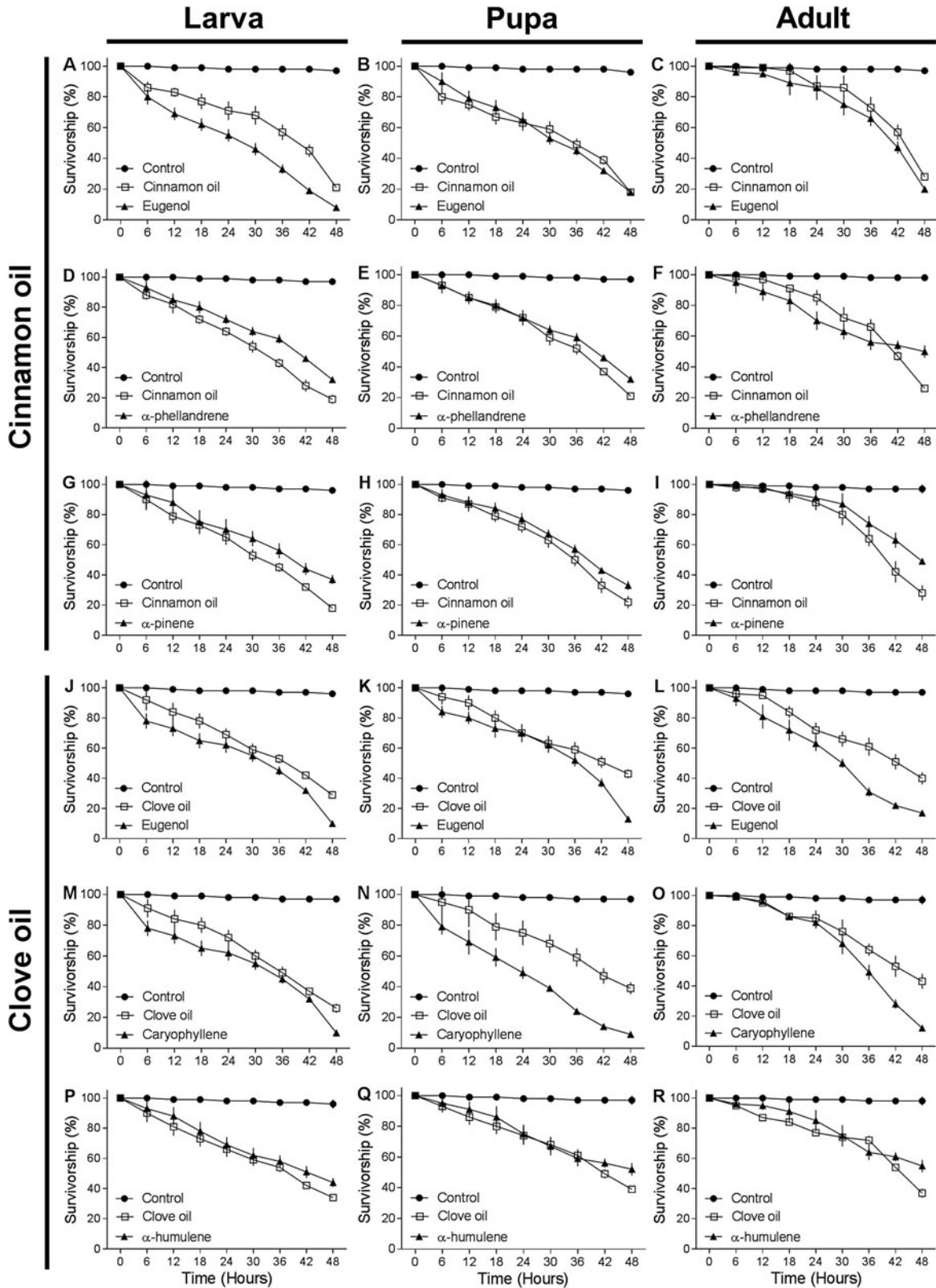


Fig. 3. Lethal time of essential oils and toxic compounds on *Tenebrio molitor* after 48 h topical applied with a LC<sub>50</sub>: cinnamon oil (a–i) and clove oil (j–r) (control insects were applied with water). Control (●), cinnamon/clove essential oil (□), eugenol, caryophyllene,  $\alpha$ -humulene,  $\alpha$ -phellandrene, and  $\alpha$ -pinene (▲).

Table 4. Repellency index of two essential oils and toxic compounds to level LC<sub>50</sub> application on larvae and adults of *Tenebrio molitor*.

Stage	Compound	Repellency index	Classification
Cinnamon			
Larva	Cinnamon oil	0.83 ± 0.04	Attractant
	Eugenol	1.10 ± 0.05	Repellent
	α-Phellandrene	0.89 ± 0.08	Attractant
Adult	α-Pinene	0.87 ± 0.09	Attractant
	Cinnamon oil	1.06 ± 0.03	Repellent
	Eugenol	1.10 ± 0.07	Repellent
Clove	α-Phellandrene	0.90 ± 0.05	Attractant
	α-Pinene	0.87 ± 0.04	Attractant
	Clove oil	0.84 ± 0.05	Attractant
Larva	Caryophyllene oxide	1.06 ± 0.04	Repellent
	Eugenol	0.98 ± 0.09	Attractant
	α-Humulene	0.74 ± 0.04	Attractant
Adult	Clove oil	1.10 ± 0.07	Repellent
	Caryophyllene oxide	1.01 ± 0.06	Neutral
	Eugenol	0.99 ± 0.08	Attractant
	α-Humulene	0.84 ± 0.05	Attractant

Treatments were classified as neutral if the index was equal to one (1); repellent if higher than one (1); and attractive if lower than one (1).

The compounds of cinnamon and clove essential oils and their constituents induced mortality in larva, pupa, and adult of *T. molitor* within a short period of time. The LT<sub>50</sub> of *T. molitor* applied with LC<sub>50</sub> eugenol was approximately 30, 26, and 40 h; caryophyllene oxide was 40, 24, and 36 h; α-humulene was 54, 46, and 43 h; α-phellandrene was 45, 45, and 49 h; and α-pinene was 47, 48, and 48 h for larva, pupa, and adult, respectively. Toxic compounds affect multiple regions of the insect body over a period of time, ranging from 1 to 20–40 h for death. In this period, the necrotic areas were increasing progressively on the insect body. The comparative effects on *T. molitor* between two essential oils and toxic compounds were observed at various time points. An essential oil of quick action should be preferred for protection of products stored to be able to prevent feeding and avoid or reduce damage by insect pests (Isman, 2006; Chermenskaya *et al.*, 2010; Martínez *et al.*, 2015).

The repellency test indicated that eugenol and caryophyllene oxide had a greater effect on *T. molitor* behavior, while cinnamon and clove essential oils had little effect. Odor produced from volatile compounds was repulsive to larvae and adults of *T. molitor* and was observed during early hours after exposition. In exposure to vapors, the volatile substances enter with the air insects inhale through their spiracles as part of their respiratory process (Wasserthal, 1996). The substances are transported to different tissues through the network of tracheas and tracheoles, thus reaching their site of action. Monoterpenes eugenol, caryophyllene oxide, α-humulene, α-phellandrene, and α-pinene are majority compounds and toxic to insect pests of stored products such as *Acanthoscelides obtectus* Say (Coleoptera: Chrysomelidae) (Jumbo *et al.*, 2014) and *T. castaneum* (Padin *et al.*, 2000). Our results suggest that

cinnamon and clove essential oils and their constituents eugenol, caryophyllene oxide, α-humulene, α-phellandrene, and α-pinene have high activities of behavioral deterrence against *T. molitor*, as evaluated by the behavioral responses of larvae and adults to different odor sources and the number of insects repelled, indicating their potential to the pest control in stored products.

This study showed the potential of cinnamon and clove essential oil and main compounds to control the *T. molitor* in starches and stored products. In order to prevent or retard the development of insecticide resistance, the toxicity and repellency effects of two essential oils and toxic compounds on *T. molitor* show that they can be used individually or in mixture for the management of populations. The lethalities of eugenol, caryophyllene oxide, α-humulene, α-phellandrene, and α-pinene on *T. molitor* may have advantages by their mode of action on this insect. These findings show that the compounds of two essential oils are a potential source of insecticidal compounds and warrants further investigation.

### Acknowledgements

This research was supported by 'Coordenação de Aperfeiçoamento de Pessoal de Nível Superior (CAPES), Conselho Nacional de Desenvolvimento Científico e Tecnológico (CNPq)', and 'Fundação de Amparo à Pesquisa do Estado de Minas Gerais (FAPEMIG)'. To Asia Science for correction and English editing this manuscript.

### References

- Arthur, F.H. (1996) Grain protectants: current status and prospects for the future. *Journal of Stored Products Research* **32**, 293–302.
- Bakkali, F., Averbeck, S. & Averbeck, D. (2008) Biological effects of essential oils – a review. *Food and Chemical Toxicology* **46**, 446–475.
- Banthorpe, D.V., Charlwood, B.V. & Francis, M.J.O. (1972) Biosynthesis of monoterpenes. *Chemical Reviews* **72**, 115–155.
- Barnes, A.I. & Siva-Jothy, M.T. (2000) Density-dependent prophylaxis in the mealworm beetle *Tenebrio molitor* L. (Coleoptera: Tenebrionidae): cuticular melanization is an indicator of investment in immunity. *Proceedings of the Royal Society of London B* **267**, 177–182.
- Candy, D.J. (1978) The regulation of locust flight muscle metabolism by octopamine and other compounds. *Insect Biochemistry* **8**, 177–181.
- Chaieb, K., Hajlaoui, H., Zmantar, T., Kahla-Nakbi, A.B., Rouabhia, M., Mahdouani, K. & Bakhrouf, A. (2007) The chemical composition and biological activity of clove essential oil, *Eugenia caryophyllata* (*Syzygium aromaticum* L. Myrtaceae): a short review. *Phytotherapy Research* **21**, 501–506.
- Chermenskaya, T.D., Stepanycheva, E.A., Shchenikova, A.V. & Chakaeva, A.S. (2010) Insecto acaricidal and deterrent activities of extracts of Kyrgyzstan plants against three agricultural pests. *Industrial Crops and Products* **32**, 157–163.
- Choi, W.I., Lee, E.H., Choi, B.R., Park, H.M. & Ahn, Y.J. (2003) Toxicity of plant essential oils to *Trialeurodes vaporariorum* (Homoptera: Aleyrodidae). *Journal of Economic Entomology* **96**, 1479–1484.
- Correa, Y.D.C.G., Faroni, L.R., Haddi, K., Oliveira, E.E. & Pereira, E.J.G. (2015) Locomotory and physiological responses induced by clove and cinnamon essential oils in the maize weevil *Sitophilus zeamais*. *Pesticide Biochemistry and Physiology* **125**, 31–37.

- Cosimi, S., Rossi, E., Cioni, P. & Canale, A. (2009) Bioactivity and qualitative analysis of some essential oils from Mediterranean plants against stored-products pest: evaluation of repellency against *Sitophilus zeamais* Motschulsky, *Cryptolestes ferrugineus* (Stephens) and *Tenebrio molitor* (L.). *Journal of Stored Products Research* **45**, 125–132.
- Dapkevicius, A., Venskutonis, R., Van Beek, T.A. & Linssen, J.P.H. (1998) Antioxidant activity of extracts obtained by different isolation procedures from some aromatic herbs grown in Lithuania. *Journal of the Science and Food Agriculture* **77**, 140–146.
- Dunkel, F.V. (1992) The stored grain ecosystem: a global perspective. *Journal of Stored Products Research* **28**, 73–87.
- Enan, E. (2001) Insecticidal activity of essential oils: octopamine sites of action. *Comparative Biochemistry and Physiology Part C: Toxicology and Pharmacology* **130**, 325–337.
- Farooqui, T. (2007) Octopamine-mediated neuromodulation of insect senses. *Neurochemical Research* **32**, 1511–1529.
- Fazolin, M., Estrela, J., Catani, V., Alécio, M. & Lima, M. (2007) Propriedade inseticida dos óleos essenciais de *Piper hispidinervum* C. DC.; *Piper aduncum* L. e *Tanaecium nocturnum* (Barb. Rodr.) Bur. & K. Shum sobre *Tenebrio molitor* L. 1758. *Ciência e Agrotecnologia* **31**, 113–120.
- Fichi, G., Flamini, G., Zaralli, L.J. & Perrucci, S. (2007) Efficacy of an essential oil of *Cinnamomum zeylanicum* against *Psoroptes cuniculi*. *Phytomedicine* **14**, 227–231.
- Finney, D.J. (1964) *Probit Analysis*. Cambridge, UK, Cambridge University Press.
- Flinn, P.W., Hagstrum, D.W., Reed, C. & Phillips, T.W. (2003) United States department of agriculture-agricultural research service stored-grain area-wide integrated pest management program. *Pest Management Science* **59**, 614–618.
- Goni, P., Lopez, P., Sánchez, C., Gómez-Lus, R., Becerril, R. & Nerín, C. (2009) Antimicrobial activity in the vapour phase of a combination of cinnamon and clove essential oils. *Food Chemistry* **116**, 982–989.
- Gunasena, G.H., Vinson, S.B., Williams, H.J. & Stipanovic, R.D. (1988) Effects of caryophyllene, caryophyllene oxide, and their interaction with gossypol on the growth and development of *Heliothis virescens* (F.) (Lepidoptera: Noctuidae). *Journal of Economic Entomology* **81**, 93–97.
- Haddi, K., Oliveira, E.E., Faroni, L.R., Guedes, D.C. & Miranda, N.N. (2015) Sublethal exposure to clove and cinnamon essential oils induces hormetic-like responses and disturbs behavioral and respiratory responses in *Sitophilus zeamais* (Coleoptera: Curculionidae). *Journal of Economic Entomology* **108**, 2815–2822.
- Ho, S.H., Cheng, L.P.L., Sim, K.Y. & Tan, H.T.W. (1994) Potential of cloves (*Syzygium aromaticum*) (L.) Merr. and Perry as a grain protectant against *Tribolium castaneum* (Herbst) and *Sitophilus zeamais* Motsch. *Postharvest Biology and Technology* **4**, 179–183.
- Huang, Y., Ho, S.H., Lee, H.C. & Yap, Y.L. (2002) Insecticidal properties of eugenol, isoeugenol and methyleugenol and their effects on nutrition of *Sitophilus zeamais* Motsch. (Coleoptera: Curculionidae) and *Tribolium castaneum* (Herbst) (Coleoptera: Tenebrionidae). *Journal of Stored Products Research* **38**, 403–412.
- Isman, M.B. (2000) Plant essential oils for pest and disease management. *Crop Protection* **19**, 603–608.
- Isman, M.B. (2006) Botanical insecticides, deterrents, and repellents in modern agriculture and an increasingly regulated world. *Annual Review of Entomology* **51**, 45–66.
- Jemâa, J.M.B., Tersim, N., Toudert, K.T. & Khouja, M.L. (2012) Insecticidal activities of essential oils from leaves of *Laurus nobilis* L. from Tunisia, Algeria and Morocco, and comparative chemical composition. *Journal of Stored Products Research* **48**, 97–104.
- Jirovetz, L., Buchbauer, G., Stoilova, I., Stoyanova, A., Krastanov, A. & Schmidt, E. (2006) Chemical composition and antioxidant properties of clove leaf essential oil. *Journal of Agricultural and Food Chemistry* **54**, 6303–6307.
- Jumbo, L.O.V., Faroni, L.R., Oliveira, E.E., Pimentel, M.A. & Silva, G.N. (2014) Potential use of clove and cinnamon essential oils to control the bean weevil, *Acanthoscelides obtectus* Say, in small storage units. *Industrial Crops and Products* **56**, 27–34.
- Kim, S.I., Roh, J.Y., Kim, D.H., Lee, H.S. & Ahn, Y.J. (2003) Insecticidal activities of aromatic plant extracts and essential oils against *Sitophilus oryzae* and *Callosobruchus chinensis*. *Journal of Stored Products Research* **39**, 293–303.
- Kostyukovsky, M., Rafaeli, A., Gileadi, C., Demchenko, N. & Shaaya, E. (2002) Activation of octopamine receptors by essential oil constituents isolated from aromatic plants: possible mode of action against insect pests. *Pest Management Science* **58**, 1101–1106.
- Lee, E.J., Kim, J.R., Choi, D.R. & Ahn, Y.J. (2008) Toxicity of cassia and cinnamon oil compounds and cinnamaldehyde-related compounds to *Sitophilus oryzae* (Coleoptera: Curculionidae). *Journal of Economic Entomology* **101**, 1960–1966.
- Lerdau, M., Litvak, M. & Monson, R. (1994) Plant chemical defense: monoterpenes and the growth-differentiation balance hypothesis. *Trends in Ecology & Evolution* **9**, 58–61.
- Livingstone, M., Harria-Warrick, R. & Kravitz, E.A. (1980) Serotonin and octopamine produce opposite postures in lobsters. *Science* **208**, 76–79.
- Loudon, C. (1988) Development of *Tenebrio molitor* in low oxygen levels. *Journal of Insect Physiology* **34**, 97–103.
- Loza-Tavera, H. (1999) Monoterpenes in essential oils. *Advances in Experimental Medicine and Biology* **464**, 49–62.
- Martínez, L.C., Plata-Rueda, A., Zanuncio, J.C. & Serrão, J.E. (2015) Bioactivity of six plant extracts on adults of *Demotispia neivai* (Coleoptera: Chrysomelidae). *Journal of Insect Science* **15** (34), 1–5.
- Neethirajan, S., Karunakaran, C., Jayas, D.S. & White, N.D.G. (2007) Detection techniques for stored-product insects in grain. *Food Control* **18**, 157–162.
- Orchard, I. (1982) Octopamine in insects: neurotransmitter, neurohormone, and neuromodulator. *Canadian Journal of Zoology* **60**, 659–669.
- Padin, S., Ringuet, J.A., Bello, D., Cerimele, E.L., Re, M.S. & Henning, C.P. (2000) Toxicology and repellent activity of essential oils on *Sitophilus oryzae* L. and *Tribolium castaneum* Herbst. *Journal of Herbs, Spices and Medicinal Plants* **7**, 67–73.
- Park, I.K., Lee, S.G., Choi, D.H., Park, J.D. & Ahn, Y.J. (2003) Insecticidal activities of constituents identified in the essential oil from leaves of *Chamaecyparis obtusa* against *Callosobruchus chinensis* (L.) and *Sitophilus oryzae* (L.). *Journal of Stored Products Research* **39**, 375–384.
- Plata-Rueda, A., Martínez, L.C., Dos Santos, M.H., Fernandes, F.L., Wilcken, C.F., Soares, M.A., Serrão, J.E. & Zanuncio, J.C. (2017) Insecticidal activity of garlic essential oil and their constituents against the mealworm beetle, *Tenebrio molitor* Linnaeus (Coleoptera: Tenebrionidae). *Scientific Reports* **7**, 46406.
- Punzo, F. & Mutchmor, J.A. (1980) Effects of temperature, relative humidity and period of exposure on the survival capacity of *Tenebrio molitor* (Coleoptera: Tenebrionidae). *Journal of the Kansas Entomological Society* **53**, 260–270.

- Regnault-Roger, C., Hamraoui, A., Holeman, M., Theron, E. & Pinel, R. (1993) Insecticidal effect of essential oils from Mediterranean plants upon *Acanthoscelides obtectus* Say (Coleoptera, Bruchidae), a pest of kidney bean (*Phaseolus vulgaris* L.). *Journal of Chemical Ecology* **19**, 1233–1244.
- SAS Institute. (2002) *The SAS System for Windows, Release 9.0*. Cary, NC, SAS Institute.
- Schroeckenstein, D.C., Meier-Davis, S. & Bush, R.K. (1990) Occupational sensitivity to *Tenebrio molitor* Linnaeus (yellow mealworm). *Journal of Allergy and Clinical Immunology* **86**, 182–188.
- Shaaya, E., Kostjukovski, M., Eilberg, J. & Sukprakarn, C. (1997) Plant oils as fumigants and contact insecticides for the control of stored-product insects. *Journal of Stored Products Research* **33**, 7–15.
- Shahverdi, A.R., Monsef-Esfahani, H.R., Tavasoli, F., Zaheri, A. & Mirjani, R. (2007) Trans-cinnamaldehyde from *Cinnamomum zeylanicum* bark essential oil reduces the clindamycin resistance of *Clostridium difficile* in vitro. *Journal of Food Science* **72**, S55–S58.
- Simić, A., Soković, M.D., Ristić, M., Grujić-Jovanović, S., Vukojević, J. & Marin, P.D. (2004) The chemical composition of some Lauraceae essential oils and their antifungal activities. *Phytotherapy Research* **18**, 713–717.
- Stefanazzi, N., Stadler, T. & Ferrero, A. (2011) Composition and toxic, repellent and feeding deterrent activity of essential oils against the stored-grain pests *Tribolium castaneum* (Coleoptera: Tenebrionidae) and *Sitophilus oryzae* (Coleoptera: Curculionidae). *Pest Management Science* **67**, 639–646.
- Wasserthal, L.T. (1996) Interaction of circulation and tracheal ventilation in holometabolous insects. *Advances of Insect Physiology* **26**, 297–351.
- Whim, M.D. & Evans, P.D. (1988) Octopaminergic modulation of flight muscle in the locust. *Journal of Experimental Biology* **134**, 247–266.
- XLSTAT. (2004) *XLSTAT for Excel*. Addinsoft, UK.
- Yang, Y.C., Lee, H.S., Lee, S.H., Clark, J.M. & Ahn, Y.J. (2005) Ovicidal and adulticidal activities of *Cinnamomum zeylanicum* bark essential oil compounds and related compounds against *Pediculus humanus capitis* (Anoplura: Pediculidae). *International Journal of Parasitology* **35**, 1595–1600.
- Yoo, C.B., Han, K.T., Cho, K.S., Ha, J., Park, H.J., Nam, J.H. & Lee, K.T. (2005) Eugenol isolated from the essential oil of *Eugenia caryophyllata* induces a reactive oxygen species-mediated apoptosis in HL-60 human promyelocytic leukemia cells. *Cancer Letters* **225**, 41–52.
- Zanuncio, J.C., Mourão, S.A., Martínez, L.C., Wilcken, C.F., Ramalho, F.S., Plata-Rueda, A. & Serrão, J.E. (2016) Toxic effects of the neem oil (*Azadirachta indica*) formulation on the stink bug predator, *Podisus nigrispinus* (Heteroptera: Pentatomidae). *Scientific Reports* **6**, 30261.
- Zapata, N. & Smagghe, G. (2010) Repellency and toxicity of essential oils from the leaves and bark of *Laurelia sempervirens* and *Drimys winteri* against *Tribolium castaneum*. *Industrial Crops and Products* **32**, 405–410.
- Zettler, J.L. & Arthur, F.H. (2000) Chemical control of stored product insects with fumigants and residual treatments. *Crop Protection* **19**, 577–582.